

NELSON

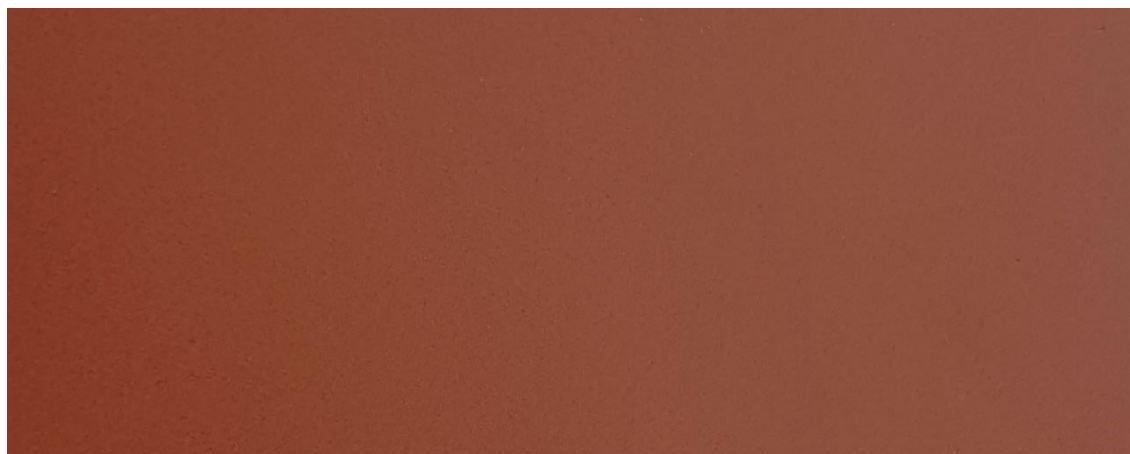
PIGMENTED HAIRCELL

NELSON is our traditional shiny faced Indian belting leather, with a fine hair cell print available in a large variety of colours to choose from.

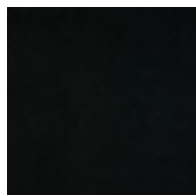
Finish	Pigmented Hair cell
Type	Buffalo
Size	Single Butts
Thickness	7 – 10 sqft approximately
Country of origin	3.4 – 3.8 mm approximately
Application	India Belting, Saddlery + Strapping



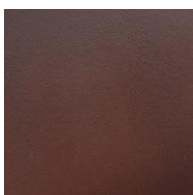
SADDLERY +
STRAPPING



please use images as guides, for true reference please request a sample or contact one of our reps today.



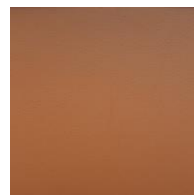
black



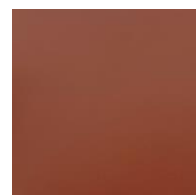
chocolate



cognac



tan



oak